

कूर्म शिला तथा अष्ट शिला

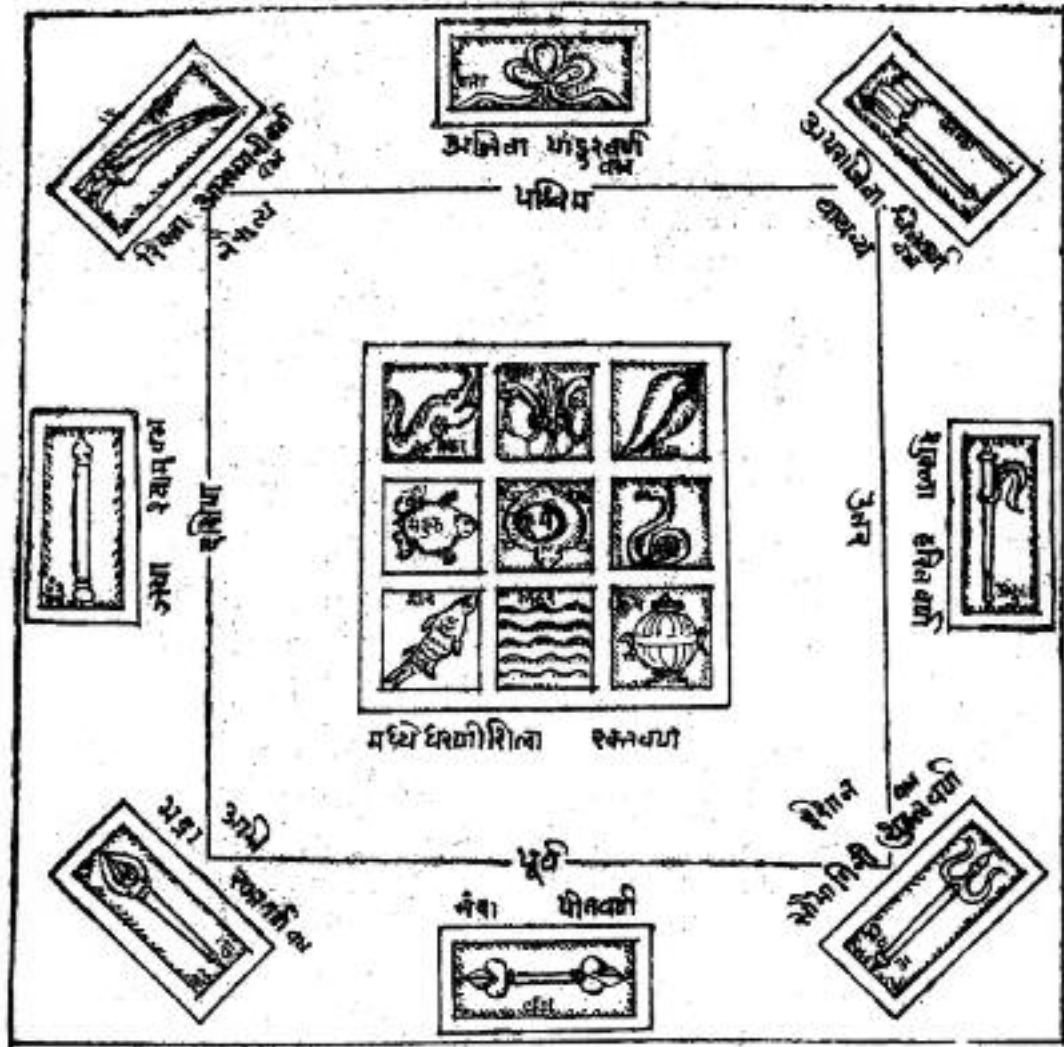


Fig. 1 Drawing of the *kūrma-silā* by Sthapati P. O. Sompura, based on the Vāstu text *Kṣīrārṇava*.



Fig. 2 A tortoise as support for a lamp-stand (*dīpa-stambha*) in a temple courtyard, Kerala. Photo courtesy Paul Martin-Dubost.



Fig. 3 Lamps for *āraṭi*.



Fig. 4 Meru Yantra supported on the back of a tortoise.



Fig. 5 Kūrma in front of Nandi. Babulnatha temple, Mumbai. Photo courtesy Anjali Kothari.



Fig. 6 Churning of the Ocean pillar from Andhra Pradesh. State Archaeology Museum, Hyderabad.



Fig. 7 Viṣṇu's Kūrma *avatāra* – Churning of the Ocean, Gadhwa, Uttar Pradesh, c. 9th century. Photo courtesy American Institute of Indian Studies, Gurgaon.



Fig. 8 Viṣṇu's Kūrma *avatāra* on a lintel, 10th century. Archaeological Museum, Khajuraho.

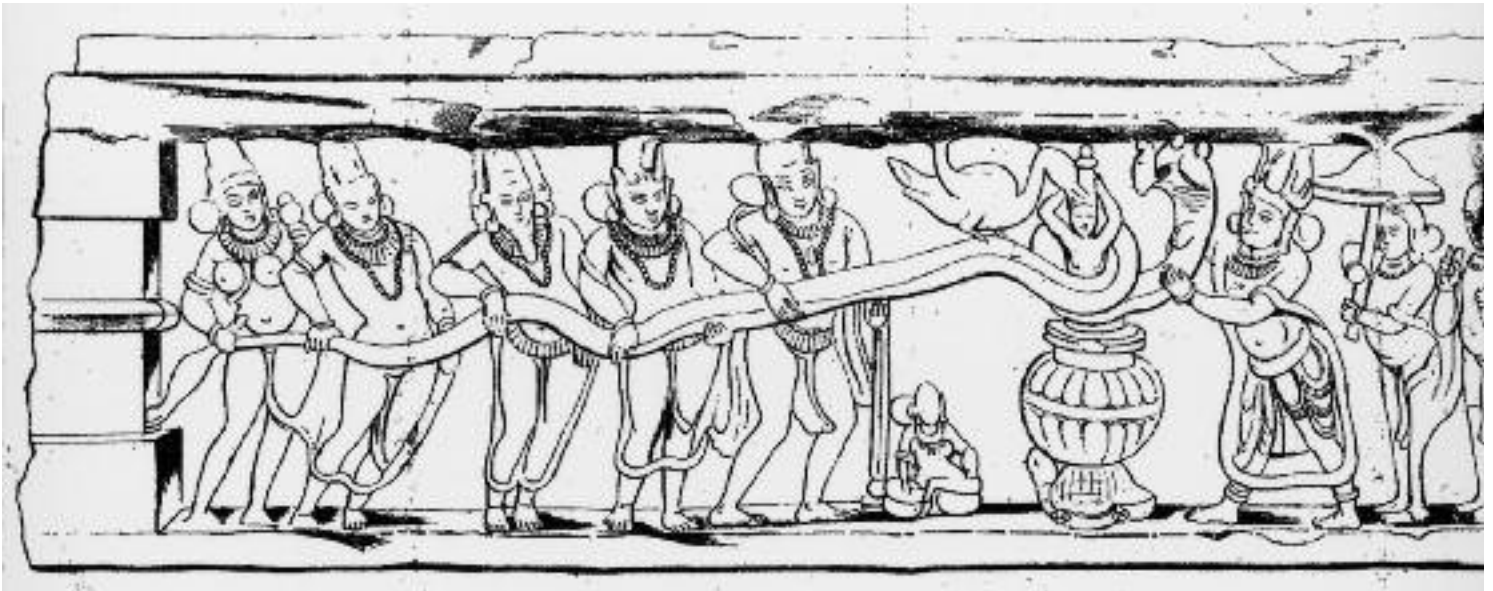


Fig. 9 F. C. Maisey's drawing of the Churning of the Ocean based on a sculptural relief at Kālañjar. After Maisey, 'Description of the Antiquities of Kalinjar,' *Journal of the Asiatic Society of Bengal* 17, 1 (1848).



Fig. 10 Churning of the Ocean painted on a door, 17th century. Orchha.



Fig. 11 Kūrma *avatāra* with a perforation on its back, 11th century. Markandi. Photo courtesy American Institute of Indian Studies, Gurgaon.



Fig. 12 Brass turtle with a lotus embossed in the centre of its back. Kolhapur.



Fig. 13 Devotees seated on the back of the large brass turtle in front of the Khaṇḍobā temple, Jejuri.



Fig. 14 A female figure, possibly the Earth Goddess, seated on a tortoise, Sanchi Stūpa II, c. 2nd century BCE.
Photo courtesy American Institute of Indian Studies, Gurgaon.



Fig. 15 Gaṇeśa from Orissa wearing tortoise amulets. The British Museum, London.